



Refrigerant gas detection module

(Model: ZP201)

User's Manual

Version: 1.2

Issue Date.2021-12-20

Zhengzhou Winsen Electronics Technology Co., Ltd

Statement

This manual's copyright belongs to Zhengzhou Winsen Electronics Technology Co., LTD. Without the written permission, any part of this manual shall not be copied, translated, stored in database or retrieval system, also can't spread through electronic, copying, record ways.

Thanks for purchasing our product. In order to let customers use it better and reduce the faults caused by misuse, please read the manual carefully and operate it correctly in accordance with the instructions.

If users disobey the terms or remove, disassemble, change the components inside of the sensor, we shall not be responsible for the loss.

The specific such as color, appearance, sizes &etc., please in kind prevail.

We are devoting ourselves to products development and technical innovation, so we reserve the right to improve the products without notice. Please confirm it is the valid version before using this manual. At the same time, users' comments on optimized using way are welcome.

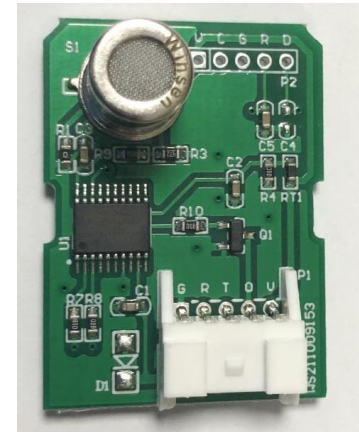
Please keep the manual properly, in order to get help if you have questions during the usage in the future.

Zhengzhou Winsen Electronics Technology CO., LTD.

ZP201 Refrigerant gas detection module

Product Description

ZP201 refrigerant gas detection module adopts advanced multi-layer thick film manufacturing process semiconductor gas sensor element. The gas sensor element contains a filter adsorption layer to reduce the interference of alcohol and other gases, and has extremely high sensitivity to refrigerant gas. The module has been aged , calibration, calibration, with good consistency and high



Terminal definition

Pin	Name	Function
G	GND	Input power -
R	/	/
T	/	/
O	Output	PWM signal output (need to connect external pull-up resistor)
V	5V	Input power +

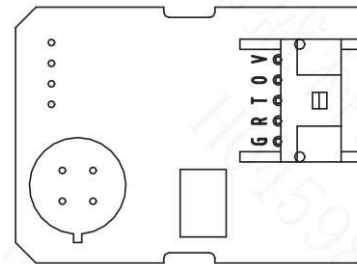


Figure 2: Module Pin Diagram

Definition of output signal

Status	PWM	
	output	
Preheating	H: 75ms	L: 300ms
Work	H: 75ms	L: 300ms
Alarm	H: 225ms	L: 150ms
Fault	H: 300ms	L: 75ms

Note: After the module enters the alarm state, it will keep the alarm state and will not switch to other states. It needs to be powered on again to exit the alarm state.

Cautions

- Please do not put the module in organic solvent (include silica gel and other cementing compound), painting, medicament, oils and fuels, high concentration gas etc.
- Please do not impact or vibrate the module seriously.
- Please warm up for 5 min before first use.
- Please do not use the module related with personal safety.
- Please do not install the module in the severe convection environment.

- Please do not put in the module in high concentration organic gas for long time.
- Please supply the module with requested voltage as manual strictly, if voltage is higher than 5.5V, the module will be destroyed irreversibly.